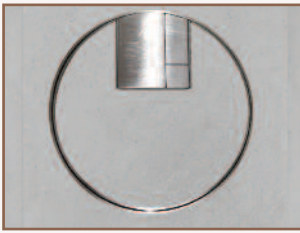
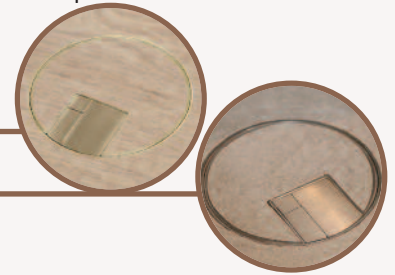


The Minima round series floor box offers a huge number of variations, enabling it to satisfy almost any site conditions. The make up of the box is shown below, together with the options available. If your required option is not covered here please call our sales team who would be happy to suggest alternatives.

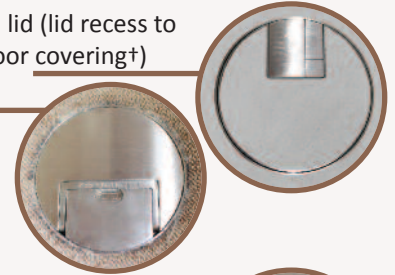


**Lid options**

- Brass
- or stainless steel



- As standard with a recessed lid (lid recess to be any depth to suit your floor covering†)
- or with a flat lid



**Optional Extras:**

- MIN-BRONZE** Extra to supply a bronze surface finish to a brass box to achieve a dark brown antique bronze effect
- MIN-RS\*\*-TR-SAT** To supply lid and trimless frame with a satin polished outlet flap
- MIN-RS\*\*-TR-mir** To supply lid and trimless frame with a mirror polished outlet flap
- MIN-RS\*\*-FL-SAT** To supply lid and trim frame with a satin polished outlet flap
- MIN-RS\*-ST-TR-SAT** To supply lid and trim frame mirror polished outlet flap
- MIN-FLTLID** Extra to supply lid with a flat lid instead of recessed

**Frame Options**

- As standard without trim flange
- Optional trim flange available



**Outlet flap options**

The outlet flap is cast from the same material as the lid and frame

- Standard satin finish on the outlet flap, also available in mirror polished
- Standard handle contains Cableduct name. Also available without the name

**Base options (See page 2 for further information)**

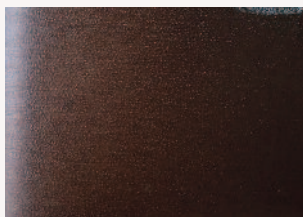
- Depth (85 or 120 as standard, or any depth greater than 65mm is possible). Note 80mm minimum depth to top of finished floor
- Feed type - conduit (cavity or screed), in screed trunking
- Fitting type - either RETRO style with the base fitting entirely within the 127mm diameter (MIN-RSxR),



or fitted on a larger base box (MIN-RSxS)

- As standard gives 30mm plug top space for 65mm boxes, 30mm for 85mm boxes, and 70mm for 120 deep box. Any plug top space can be provided.

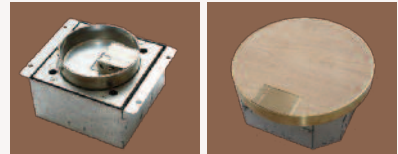
† We recommend a recess of 30mm or less due to the weight of the lid when filled



*Antique Bronze finish available  
Note it is a surface finish only*

Bases are held in stock, tops are finished to order and made to your specific lid recess which must be specified on order. To order please call on 020 8683 1126, fax on 020 8689 7896 or email [info@cableductuk.com](mailto:info@cableductuk.com)

Code prefix	Material	Number of outlets	Outlet plate prefix	Box size (mm) <sup>††</sup>	Base box depth (mm)	Plug top space (mm)
MIN-RS6R-ST	MIN-RS6R-BR	Single	SBOX-7RS-R**	127	65	30
MIN-RS8R-ST	MIN-RS8R-BR	Single	SBOX-7RS-R**	127	85	30
MIN-RS2R-ST	MIN-RS2R-BR	Single	SBOX-7RS-R**	127	120	70
MIN-RS6S-ST	MIN-RS6S-BR	Single	SBOX-7RS**	156x156	65	30
MIN-RS8S-ST	MIN-RS8S-BR	Single	SBOX-7RS**	156x156	85	30
MIN-RS2S-ST	MIN-RS2S-BR	Single	SBOX-7RS**	156x156	120	70



Trimless finish stainless steel, shown MIN-RS8S standard base  
Standard trimless finish brass, shown RL8R retro base

Finish suffix:  
trimless satin  
-TR-SAT

trimless mirror  
-TR-MIR

trim satin  
-FL-SAT

trim mirror  
-FL-MI

Example: 85mm deep satin stainless steel trimless box:  
MIN-RS-85-ST-TR-SAT

MIN-RSxR:

Octagonal base fits within the diameter of the top lid

MIN-RxS:

Top round lid fits within larger square base box

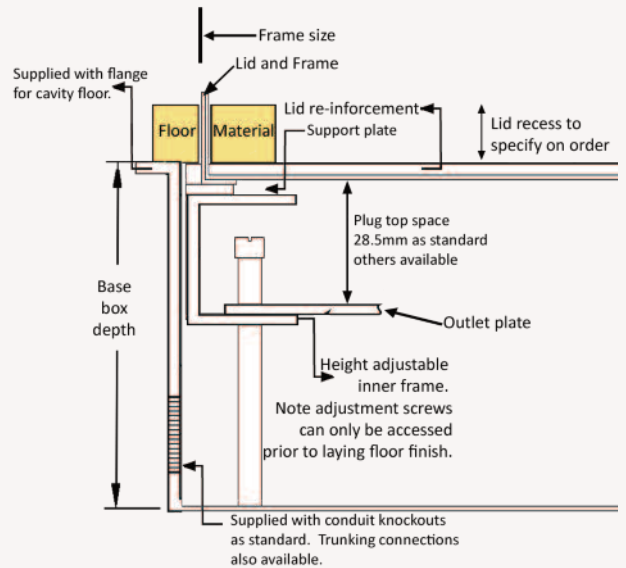
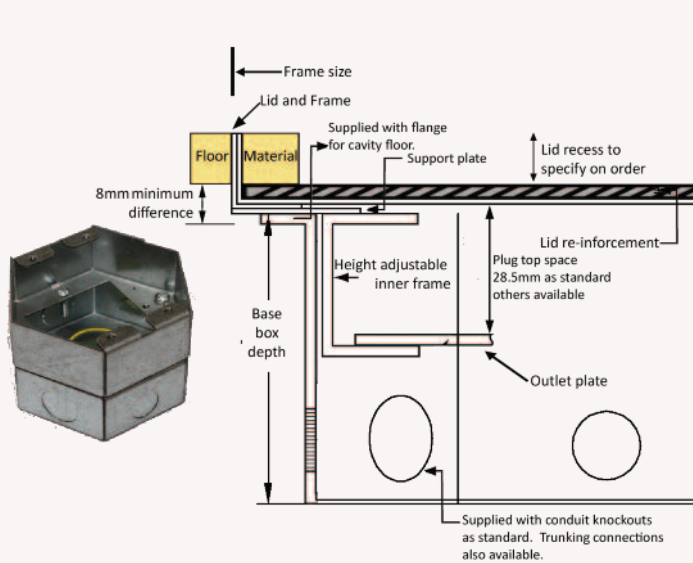
**Benefits**

- The top lid and frame can be levelled after the surrounding floor finish has been laid
- When laying in screed or terrazzo floor there is no risk of pitting as the depth is uniform
- The recess inside the lid can be made to match the thickness of the surrounding floor

**Site issues**

- There is a difference of at least 8mm between the infill inside the lid and the top of the sub floor due to material thicknesses. This is addressed by reducing the thickness inside the lid relative to the surrounding floor by adjusting packing layers or cutting down the timber or stone
- The lid must be levelled to the level of the final floor finish prior to the floor being laid over the top of the base box
- The height of the top lid and frame must be at least equal to the thickness of the surrounding floor, even when fitted with a flat lid

**Cross section**



**Outlet plates**



SBOX-7RS-R01  
Blank Plate



SBOX-7RS-R76  
Single 5A socket



SBOX-7RS-R59  
1x Euromod 50x50 apertures



SBOX-7RS-R91  
2 x LJ6C apertures



SBOX-7RS01  
Blank Plate



SBOX-7RS-75W  
Single switched socket



SBOX-7RS-5A  
Single 5A socket



SBOX-7RS-59  
1x Euromod 50x50 apertures



SBOX-7RS91  
2 x LJ6C apertures